

Challenges of artificial intelligence in the hotel, catering and tourism industries and possible practices in training courses

A global introduction: the French framework for using AI in education
by Pierre Leducq - Délégué régional académique au numérique éducatif

pierre.leducq@ac-nantes.fr

Context

•The state-run French educational system:

-National educational programmes and policies

-Mid-level implementation in 30 educational districts (*académies*)

-Local implementation in schools

•My team: digital education in the Académie de Nantes

•Purpose of this introduction: sharing our evolving guidelines



The process of writing a framework (2024-2025)

Preliminary work

Wish for a simple and practical document :
general principles and guidelines

Wish for a positive document on the
challenges and potential of AI as well as its
limitations and risks.

Draft document based on reflections and
work initiated by the Ministry.

Consultation

Draft submitted to the educational
community.

.Oral and written contributions during workshops.

.Written contributions by email and forums.

.500+ contributions were collected.

Final text published in June 2025.

Next steps (2025+)

This document will be evolving; it is a
compromise text. Anticipating and
supporting change is important.

Training personnel.

Local implementation

.District level (académies)

.School level

Potential uses, risks and limits of AI in education

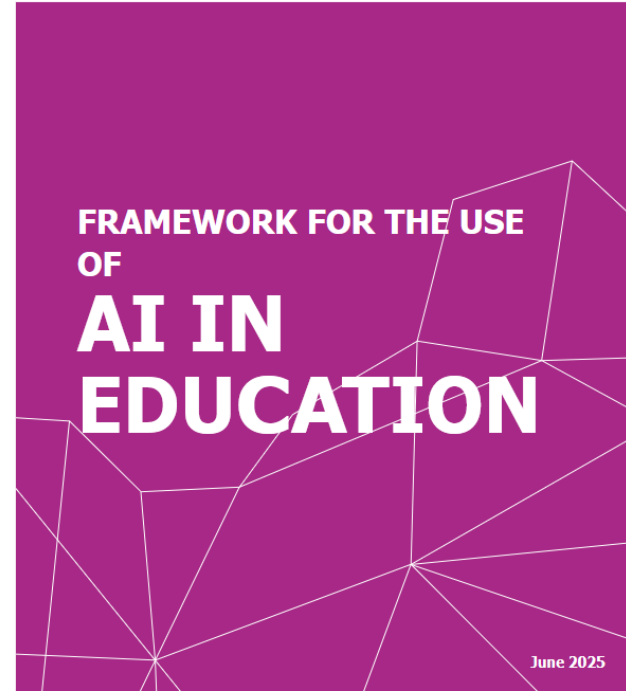
A responsible use of AI requires knowledge that schools must impart to students.

Generative AI is already in use for teaching, learning and management.

Concerns are being raised about ethics, data protection, employment and environmental issues.

In the field of education, AI tools raise questions about:

- their impact on learning processes, on interpersonal skills and on the life skills of future citizens,
- the risk of amplifying biases, stereotypes and discrimination,
- the risk of inaccuracies or false answers ('hallucinations'),
- Some core principles such as the purpose of homework and student assessment.



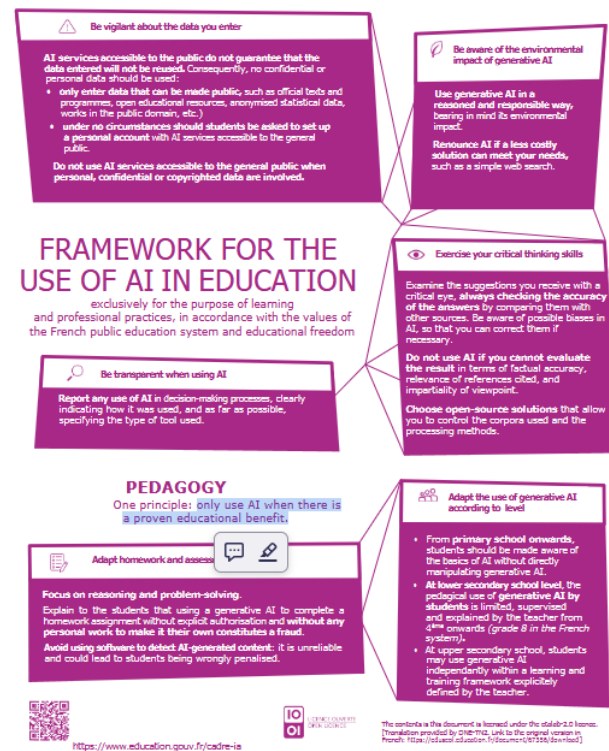
General principles

While fostering inclusion, accessibility and equity, the use of AI must not undermine the core values of:

- .human relationships,
- .student learning,
- .the practices of education professionals.

Guidelines - only use AI when there is a proven educational benefit

- Be careful about the data you transfer
- Be aware of the environmental impact of generative AI
- Be transparent when using AI
- Use your critical thinking skills
- Adapt homework and assessment methods
- Consider students' age when using generative AI



Download page

<https://edunumrech.hypotheses.org/15271>



AI in the hotel, catering and tourism industries

A striking example

Andon Labs - Our AI just opened a cafe in Stockholm

Andon Labs

<https://youtu.be/3oM39Snbv6Q>

